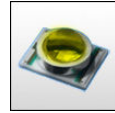


## STRADA-B-XR LENSES FOR CREE XR-E LEDs



- Specially designed for Cree XR-E series of LEDs.
- New extremely wide street light design with very wide horizontal and vertical angle.
- Special care taken to make a uniform white or warm white illumination. Lenses work well with other colors, too.
- Lens material optical grade PMMA. Allows use of high current and temperature conditions
- Best available optical efficiency, approximately 95%.
- Fastening to heat sink with or without PU foam adhesive tape of automotive grade, please select which suits the best for your needs.

### LENS TYPES

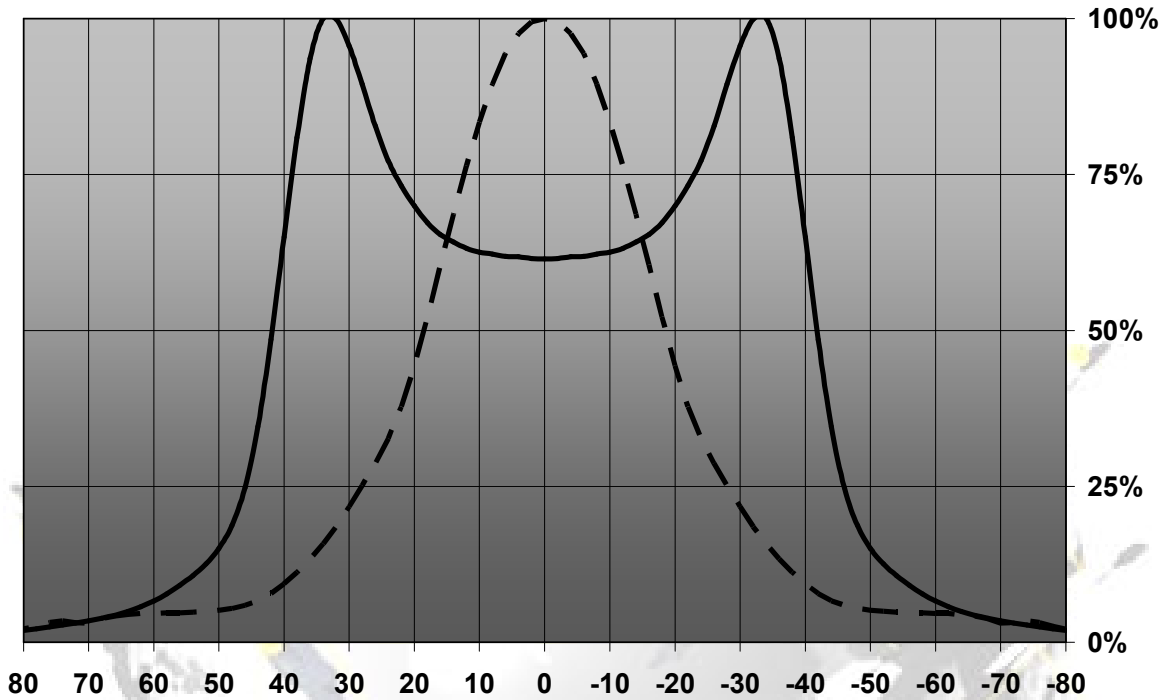
NAME	ORDERING CODE	FWHM Angle
Strada-B-XR	C10924_Strada-B-XR	±42° x ±18°
Strada-B-XR-TAPE	CA10925_Strada-B-XR-tape	±42° x ±18°

EULUMDAT & IES FILES AVAILABLE BY REQUEST

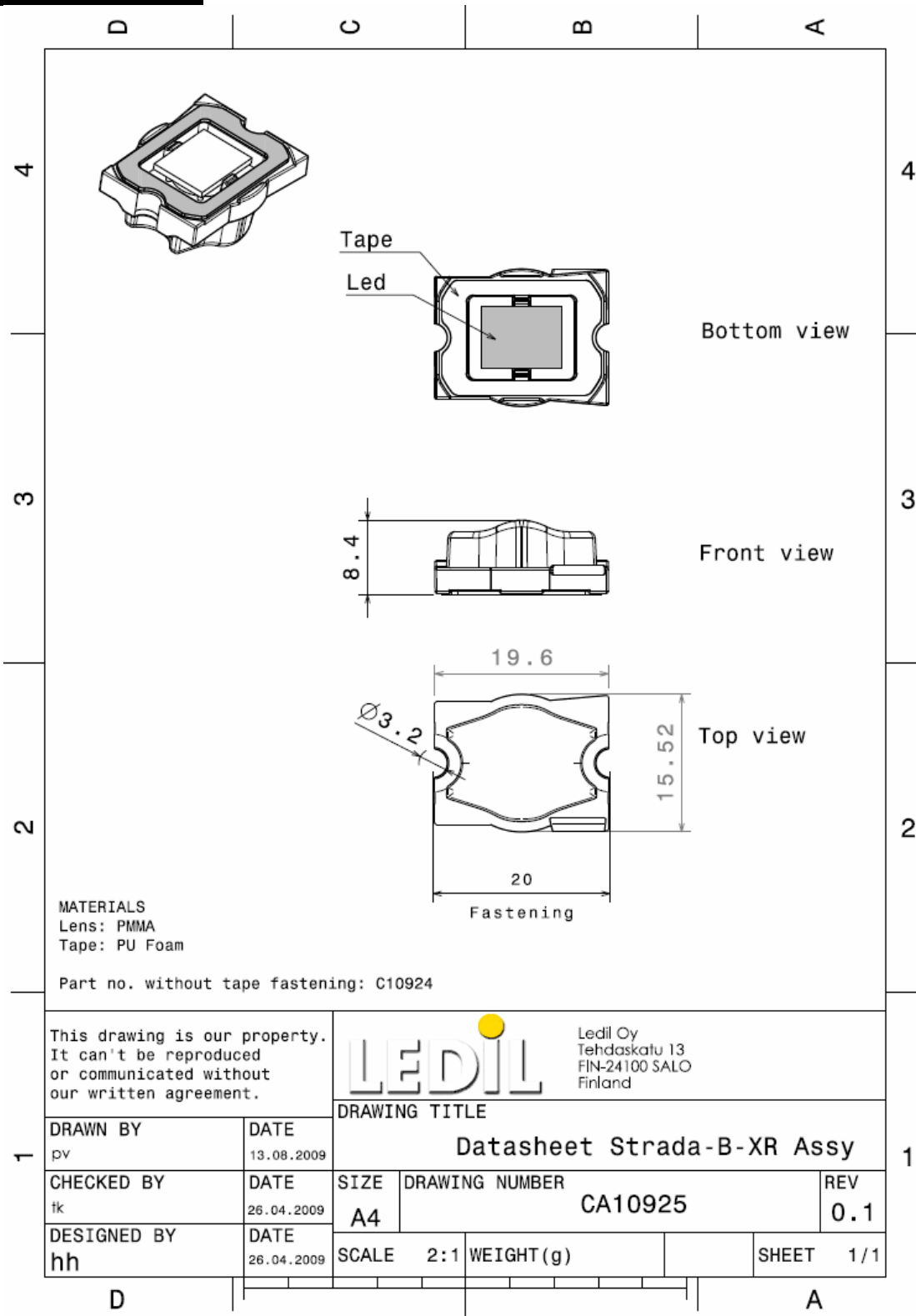
© Ledil Oy – PRELIMINARY - Subject to change without prior notice

MEASUREMENT DATA

Relative Intensity of C10924\_Strada-B-XR



## DRAWINGS



© Ledil Oy – PRELIMINARY - Subject to change without prior notice